



# Pechino Table

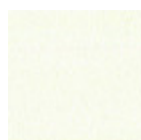
design Midj R&D, 2014

Fixed table with base in painted steel. Top available in glossy glass, anti-scratch glass, veneered wood or solid wood.

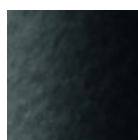


## Colors and Materials

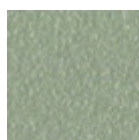
### Structure



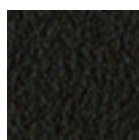
White steel



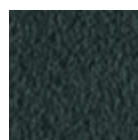
Black steel



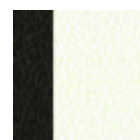
Sand steel



Brown steel

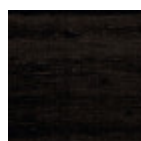


Grafite steel

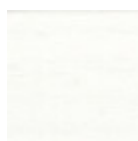


Multicolor steel

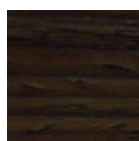
### Coating



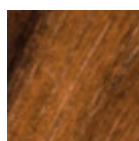
Black lacquered veneered wood



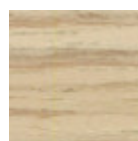
White lacquered veneered wood



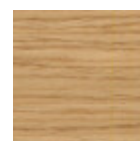
Veneered wood dark oak



Veneered flamed walnut



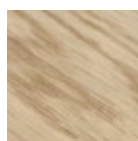
Veneered wood natural finish



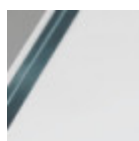
Veneered wood natural oak finish



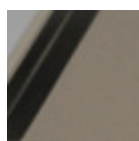
Solid walnut bark edge



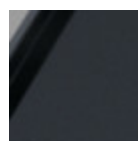
Solid oak straight edge



Extraclear transparent glass



Matt sand antiscratch glass



Matt graphite antiscratch glass



Extra clear matt white antiscratch glass

## Dimensions

Dimensions found or type unknown

	A (cm) (inch)	B (cm) (inch)	C (cm) (inch)
<b>200x106</b> (cm) (inch)	74 29.1	200 78.7	106 41.7
<b>250x106</b> (cm) (inch)	74 29.1	250 98.4	106 41.7

## Volumetric Details

**Weight** 186 Kg  
**Volume** 1.24 mc  
**Package** 3

---

## Downloads

[Pechino extensible 3D \(zip\)](https://www.midj.com/images/uploads/resources/pechino-all-3d.zip) - <https://www.midj.com/images/uploads/resources/pechino-all-3d.zip>

[Pechino 3D \(zip\)](https://www.midj.com/images/uploads/resources/pechino-3d.zip) - <https://www.midj.com/images/uploads/resources/pechino-3d.zip>

## Materials Certifications

### Solid oak straight edge

#### FEATURES AND PLUS

Solid wood tops are obtained from the trunk of the tree, in particular from the heartwood, or the inner part (the less young one). Each top has unique characteristics in terms of veins and knots due to the natural origin of the material. To reach the widths necessary for the realization of a top for domestic use, several floorboards/strips are joined together in an effort to maintain the greater possible uniformity.

#### MAINTENANCE

For the regular cleaning schedule of Solid woos tops, use a wet sponge with mild soap diluted in water or specific products. Dry after each application with a cloth or absorbent paper. Do not use abrasive products. In case of accidental release of liquid substances, dab immediately the surface with absorbent paper or a dry, clean cloth. Avoid proximity to heat sources. Expose the solid wood surfaces to light, for example by opening periodically the extensions of the tables that are placed inside the structures, or by moving any objects such as vases and accessories generally resting on the top.